



*Kids -  - Dental®*

# PRODUCT CATALOGUE



# INDEX

## Restorative

Bioflx Crown (Preformed esthetic flexible crowns)

Kids-e-Crown (Preformed zirconia crowns)

Kids-e-Restore(Self adhesive light cure GIC)

## Preventive

e-SDF (38% Silver diamine fluoride)

e-Pit and Fissure Sealant(Nano silver reinforced pit and fissure sealant)

e-Space Maintainer (Preformed space maintainer)

## Endodontics

e-MTA (Mineral trioxide aggregate)

e-MTA Putty (Pre-mixed mineral trioxide aggregate)

e-MTA Carrier (Mineral trioxide aggregate carrier)

e-MTA Sealer (Bioceramic sealer)

e-IodoCal (Calcium hydroxide paste with iodoform)

Kids-e-Files (Pediatric rotary files)

## Periodontics

e-Splint (Esthetic fiber reinforced splint)



# Company Profile

We are a dedicated team of professionals, committed to providing the highest quality dental products for children. Established in the year 2017, by Dr. Mukul Jain, a pediatric dentist by profession, we have been at the forefront of innovation in pediatric dental care, dedicated to creating exceptional products that make a difference in children's lives. All our products are research based and passionately made using the best technologies. We believe in high quality standards and customer service. Our mission is to revolutionize pediatric dentistry through innovation and excellence in manufacturing. We are committed to developing safe, effective, and child-friendly dental products that empower dental professionals to provide the best care for young patients. Through our products, we aim to instill healthy oral habits from a young age, setting the foundation for a lifetime of smiles.



Restorative

# Bioflx Crown

*“Bioflx crowns are world’s first flexible, durable, self-adaptive and esthetic pre-formed crowns which offer properties of both stainless steel crowns and zirconia crowns.”*



Flexible



Durable



Esthetic



Self Adaptable

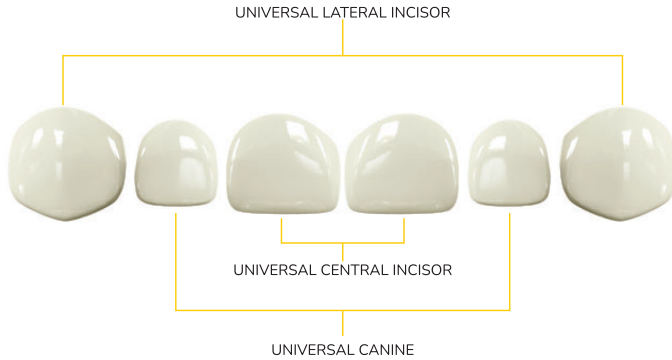
# Professional Kit



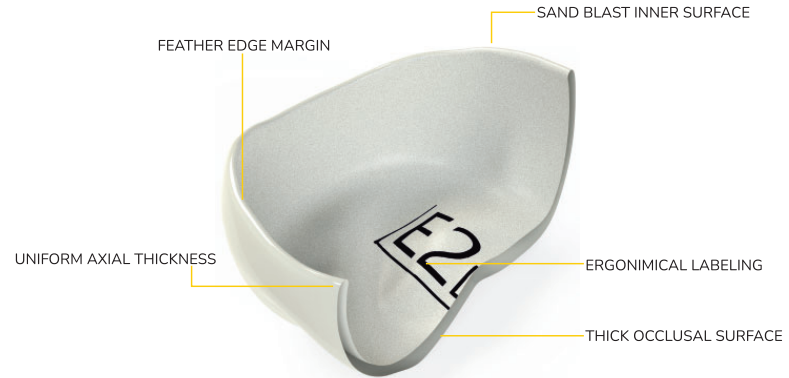
# Master Kit



# Anterior Design



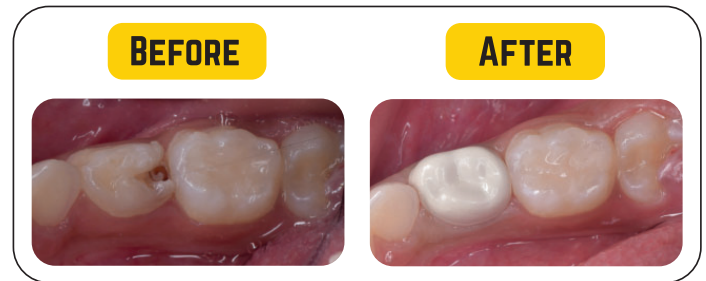
# Posterior Design



Dr. Chew Ling, Vietnam



Dr. Meenakshi S.Kher, India



# Kids-e-Crown®

*"The Smart Crown"*

**"Kids-e-Crowns are world's first pediatric smart crowns. Made of superior zirconia, highest biocompatibility for optimal gingival healing and aesthetics. Unique design aids in minimal tooth reduction, narrow sizes for space loss cases, and efficient cementation with micro mechanical locks.**



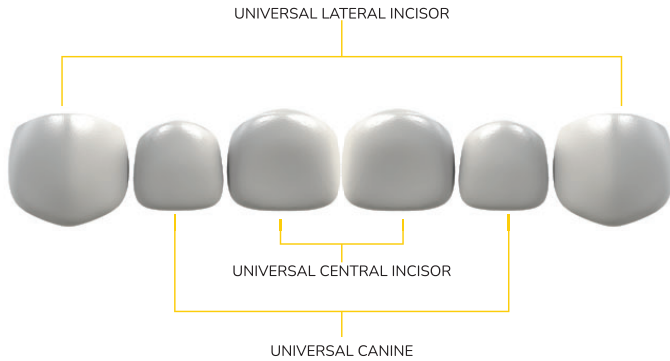
# Anterior Master Kit



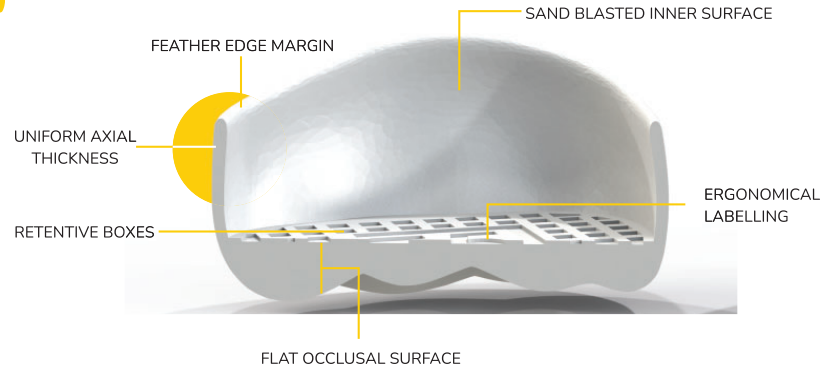
# Posterior Master Kit



# Anterior Design



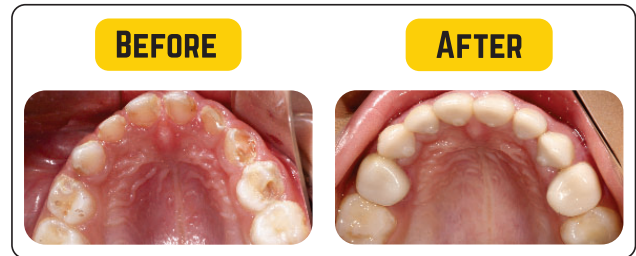
# Posterior Design



Dr. Nurana Mahmudlu



Dr. Mukul Jain, India



# Kids-e-Restore

Injectable Glass Ionomer Composite Resin

*Kids-e-Restore is a self-adhesive, light cured, flowable, and ready to use resin reinforced glass ionomer restorative*

## Features

### 1. Self-Adhesive Technology:

- Eliminates etching and bonding procedures.
- Self-etching properties with chemical adhesion.

### 2. Sustained Fluoride Release:

- Promotes antimicrobial and anticaries activity.

### 3. Ease of Placement:

- Carefully balanced viscosity for easy and convenient placement.
- Highly thixotropic, stays neatly in place, and holds its shape.

### 4. Durable and Versatile:

- Demonstrates physical performance similar to regular GIC material.

### 5. Smooth Surface:

- Provides a smooth and esthetic finish.





# Indications

- Lining under all types of filling material.
- Extended fissure sealing.
- Core build-ups.
- Restoration of smaller lesions.
- Minimal Class I, II, and III restorations.
- Class V restorations.
- Root surface restorations.
- Semi-permanent fillings.



# Technique



Fill the cavity with Kids-e-Restore



Wait for 20 seconds



Light Cure

Dr. Mukul Jain, India 



# Preventive Dentistry



38% Silver Diamine Fluoride



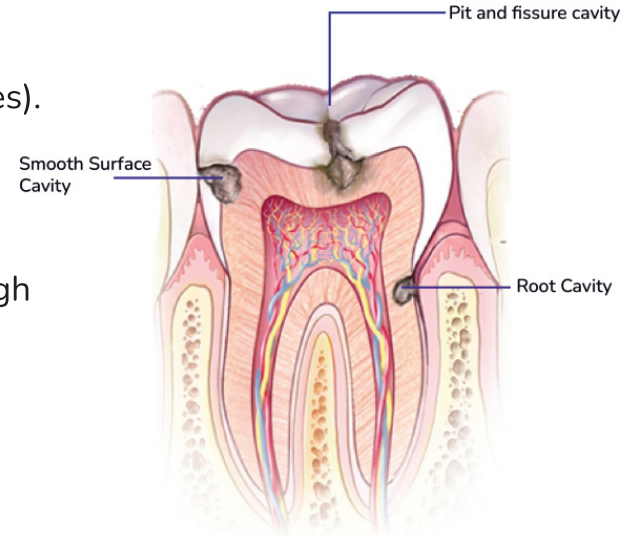
*Silver Diamine Fluoride (SDF) is a liquid substance used to help prevent caries from forming, growing or spreading to other teeth. It's safe, painless, alternative to traditional cavity drilling procedures.*

## Benefits

- › **PAINLESS:** No anesthesia required
- › **NON-INVASIVE:** No drilling required
- › **TIME SAVING:** Easy to use
- › **1 DROP:** Up to 5 surfaces
- › **3.25 ML BOTTLE:** Can cater 100 to 130 patients

# Indications

- Non-symptomatic carious lesion (Arresting and preventing caries).
- Carious lesions that cannot be treated in 1 visit.
- Root caries.
- Tooth sensitivity.
- Patient with special health care needs, severe dental phobia, high risk conditions and immune-compromised patients.
- Patients without access to traditional dental care.
- Patients not indicated for general anesthesia or oral sedation.
- Indirect pulp capping



Non-Symptomatic carious lesion not involving the pulp tissue

Dr. Mostafa Nabil Hamid 



Dr. Mukul Jain 



## Uses in General Dentistry

- Useful for un-cooperative and anxious patients
- Treatment of hypersensitivity
- Control of vital tooth preparation hypersensitivity
- Indirect pulp capping
- Difficult to reach lesion like root caries and 3rd molars



# e-Pit & Fissure Sealant

Nano silver reinforced pit and fissure sealant

*e-Pit and Fissure Sealant is the world's first nano silver-reinforced bioactive solution for optimal protection, adhesion, and extended fluoride release.*

## Features

### 1. Enhanced Protection:

- Silver Nano antimicrobial technology.
- Smooth glassy surface technology prevents plaque accumulation.

### 2. Structural Strengthening:

- Facilitates re-mineralization.

### 3. Durability:

- Excellent retention and sealing margins against micro leakage.
- Long-term resistance to wear, chipping, cracking, and fracture

### 4. Reliable Performance:

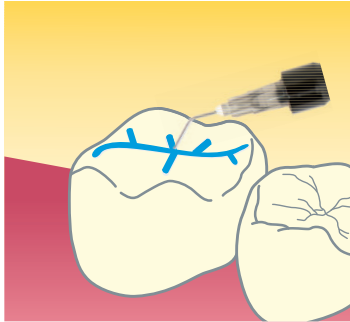
- Resistant to oral solubility.
- Low polymerization shrinkage and gap formation.



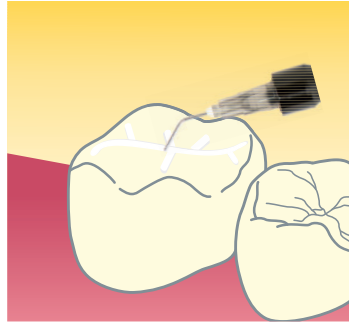
## 5.Precision Application:

- Excellent flow to penetrate even in the smallest pits and fissures.

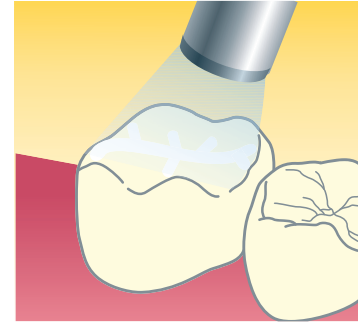
### 3 easy steps



Etch



Sealing



Light cure



Dr. Mukul Jain, India 

BEFORE



AFTER



# -SPACE MAINTAINER<sup>®</sup>

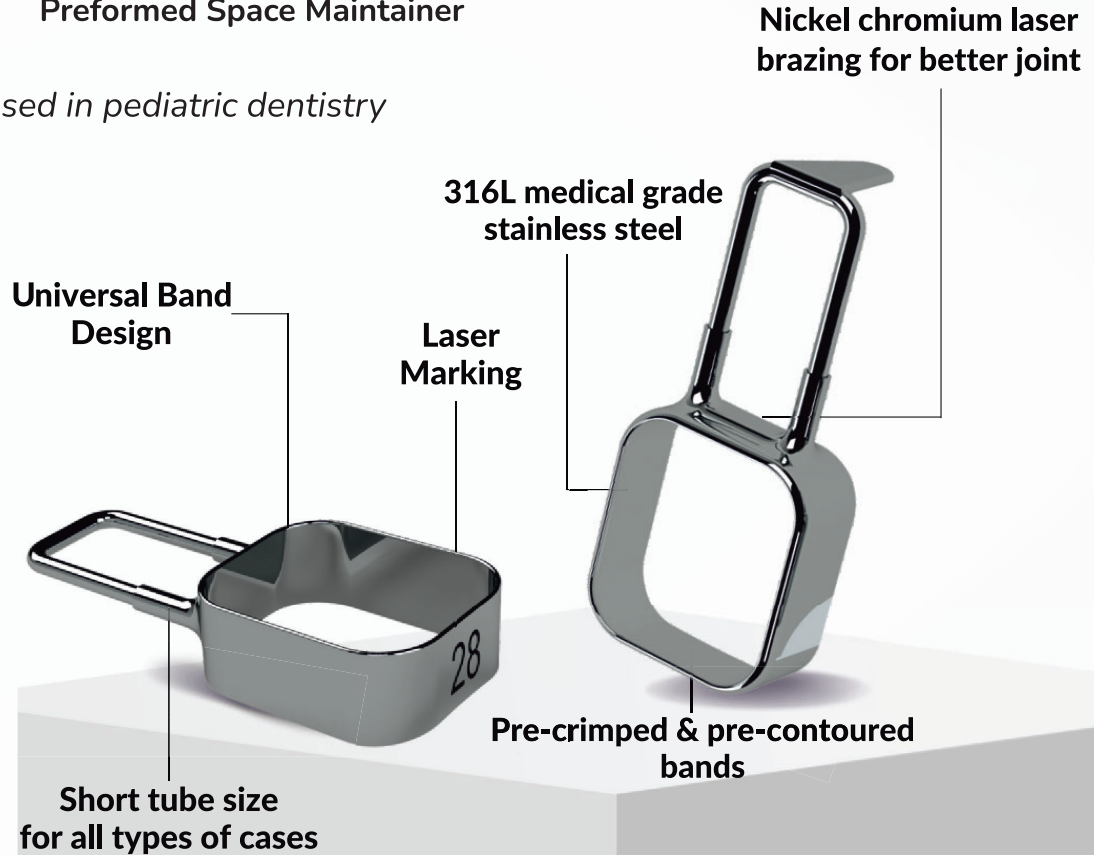
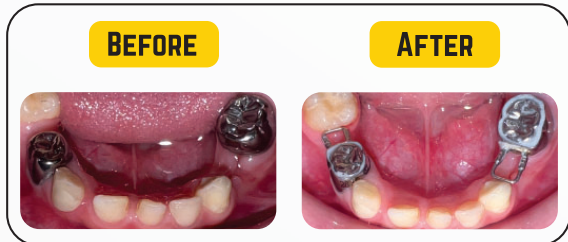
Preformed Space Maintainer

*It is a pre-formed space maintainer used in pediatric dentistry to prevent pre mature loss of space.*

## advantages

- > Single Appointment
- > No impression
- > No laboratory errors
- > Universal bands
- > Cost effective
- > Useful in sedation cases

Dr. Ha Thu, Vietnam 



# Kit Details

## Master Kit



**(74 Bands, 80 Components)**

Band Sizes: 24-42 (2 each)  
 Components:  
 Straight Loop- 30pcs  
 Curved Loop- 30pcs  
 Distal Shoe- 20pcs

## Starter Kit



**(37 Bands, 40 Components)**

Band Sizes: 24-42 (1 each)  
 Components:  
 Straight Loop- 20pcs  
 Curved Loop- 10pcs  
 Distal Shoe- 10pcs



# Accessories



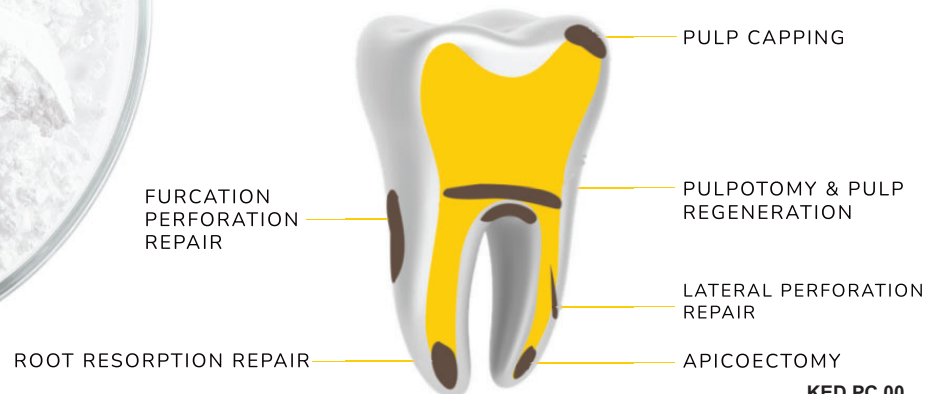


## e-MTA<sup>®</sup> Mineral Trioxide Aggregate

*e-MTA (Mineral Trioxide Aggregate) is a bioactive cement consisting of very fine hydrophilic particles of several mineral oxides.*

- Gel Based Technology
- Washout Resistant
- Fast Setting
- Bio-Active
- Anti Microbial
- Smart Packaging

## Indication

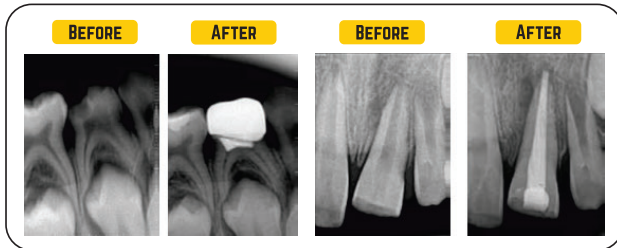




  
**e - MTA Carrier**  
Mineral Trioxide Aggregate Carrier

*e-MTA Carrier has been designed to dispense MTA at the designated site of operation, with ease of handling. From internal perforation repairs to root end fillings, it's used for a wide range of clinical MTA procedures.*

Dr. Mayur Bhattad, India 



- High Strength ● Autoclavable ● Made of high quality stainless steel
- Angled design for hard to reach canals ● Available in 0.8mm & 1.2mm.



# e-MTA Putty

Pre-mixed Mineral Trioxide Aggregate

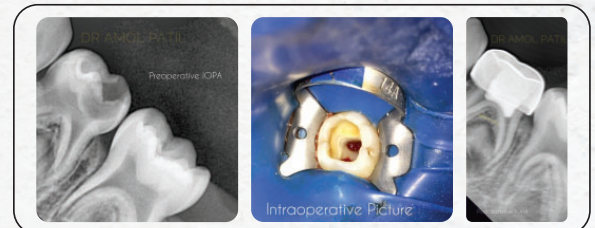
*e-MTA Putty is a pre-mixed bio-ceramic, insoluble, radiopaque and bioactive paste consisting of very fine hydrophilic particles of several mineral oxides.*

## Features

- Non Sticky Consistency
- Washout Resistance
- Direct Placement
- Non Staining
- Optimal pH for healing
- Bio Active
- No Wastage
- Handy & Easy to use



Dr. Amol Patil, India 



# - MTA Sealer

Bioceramic Sealer

*e-MTA Sealer is a pre-mixed bio-ceramic, insoluble, radiopaque and bioactive sealer consisting of very fine hydrophilic particles of several mineral oxides.*

## Features

- Bio-compatible and bio-active sealer that promotes healing.
- Calcium silicate based root canal sealer.
- High level of hydrophilicity.
- Embodies a pH that is optimal for healing.
- It's low solubility amplifies a remarkable seal.

Dr. Gunel Hasanli 





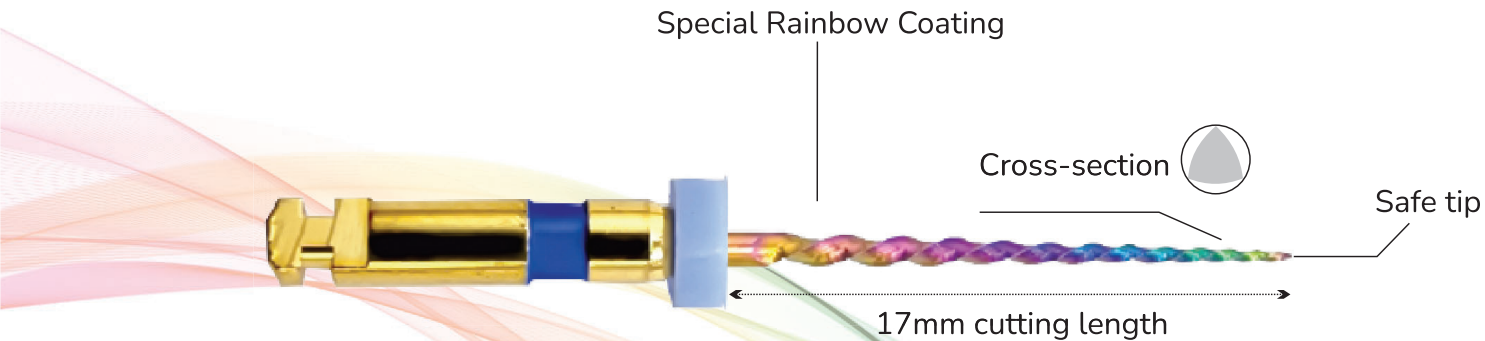
# Kids-<sup>👑</sup>e-Files

Rainbow heat treated pediatric rotary files

*Kids-e-files are advanced heat treated rainbow rotary files used for effective and efficient root canal preparation for primary teeth. The rainbow file is designed for debris removal, cutting efficiency and safety.*

*Innovative heat treatment and surface therapy of premium quality nickel-titanium alloy results in high flexibility and durability at the same time.*

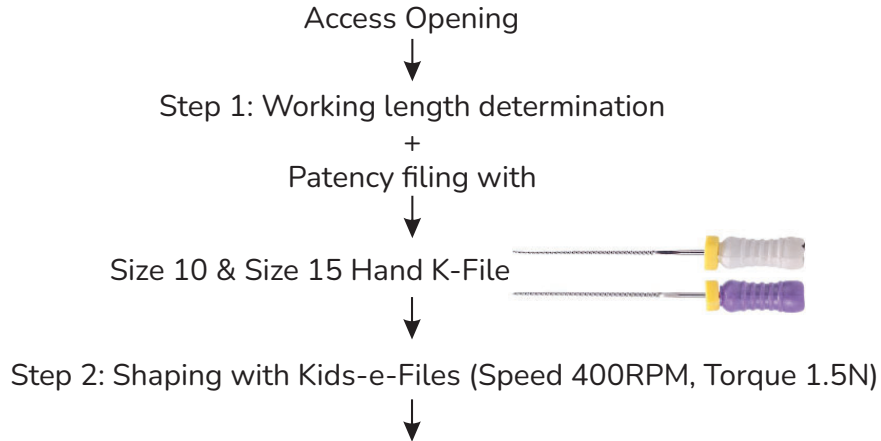
# Strong cutting force Flexible and unique design



## Features

- CM wire NiTi memory alloy- Increased flexibility and resistance to cyclic fatigue.
- Triangular cross section – Keep centre stiffness and high cutting efficiency.
- Non cutting safety tip.
- 4 percent constant taper preventing dentinal cracks and over preparation.
- Root canal debris removal is more smooth.





Anterior Teeth

Posterior Teeth

Narrow Canal

Medium Canal

Large Canal



(40/4%)



(20/4%)



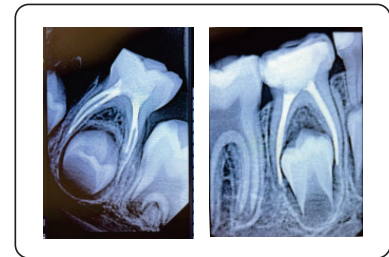
(25/4%)



(30/4%)

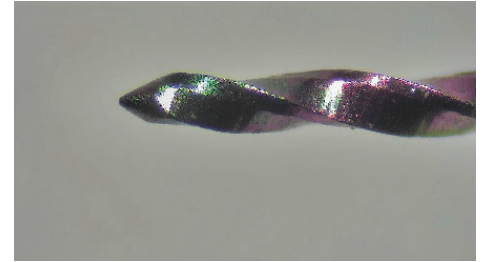


Dr. Nurana Mahmudlu 

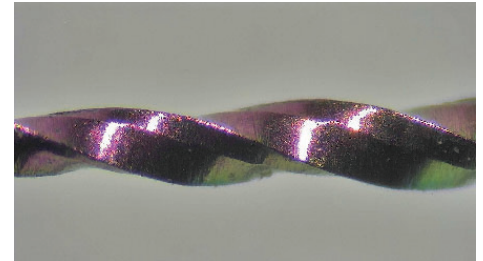


# Rainbow surface technology

- It is a three-stage heat treatment, first treating the darkest blue area, when the temperature will be high. Then it deals with its gold areas, and finally, it deals with other areas such as purple, orange, and so on.
- The whole file is divided into three sections and its heat treatment is completed in different periods of time.
- The temperature of the tip treatment is the highest and it means that this area of the tip 3 mm is the riskiest and most prone to instrument separation becoming safer.
- Therefore, the rainbow file is designed with both cutting force and safety.



Non Cutting Tip

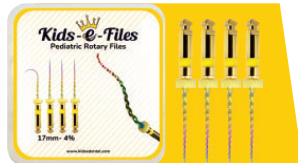


Sharp Cutting Edge

# Packaging



17mm, (20/4%), (25/4%),  
(30/4%) (40/4%)  
Assorted Files



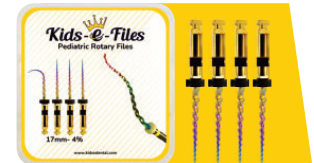
17mm, (20/4%)  
Yellow Files



17mm, (25/4%)  
Red Files



17mm, (30/4%)  
Blue Files



17mm, (40/4%)  
Black Files



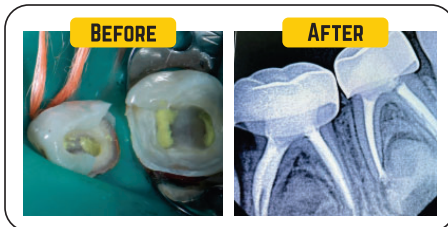
## Calcium Hydroxide Paste With Iodoform

*Premixed Calcium hydroxide paste containing iodoform with improved radiopacity and antimicrobial effect.*

### Features

- > Has an effortless and smooth application
- > Antimicrobial effects acts as intracanal medicament
- > Excellent radiopacity (Iodoform)
- > Disposable applicator tips to prevent cross contamination
- > Pre-mixed paste for temporary root canal filling
- > Non Setting and easy handling

**Dr. Gunel Hasanli** 



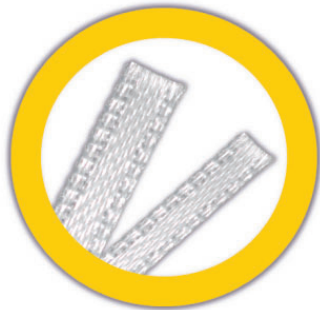


## **e-SPLINT** Esthetic fiber reinforced Splint

*e-Splint is esthetic fiber material. Medical grade polyethylene fibers are weaved into tight structural threads.*

### advantages

- High Fracture Toughness
- Easy to use and manage
- Multidirectional Reinforcement
- High Resin Permeability
- Available in 2mm, 4mm & Assorted packs



# OUR PRODUCTS

**Kids-e-Crown**  
"The Smart Crown"



**Biofix**  
Crown



**e-SPACE MAINTAINER**  
Preformed Space Maintainer



**e-SDF**  
38% Silver Diamine Fluoride



**e-MTA**      **e-MTA Carrier**  
Mineral Trioxide Aggregate      Mineral Trioxide Aggregate Carrier



## e-MTA Putty

Pre-mixed Mineral Trioxide Aggregate



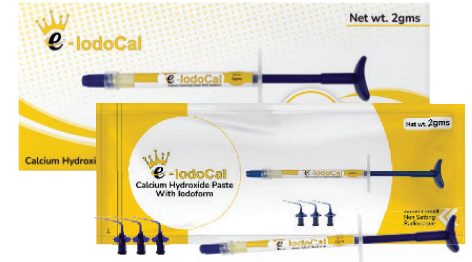
## e-MTA Sealer

Bioceramic Sealer



## e-IodoCal

Calcium Hydroxide Paste With Iodoform



## Kids-e-Files

Pediatric Rotary Files



## Kids-e-Restore

Injectable Glass Ionomer Composite Resin



## e-Pit & Fissure Sealant

Nano silver reinforced pit and fissure sealant



## e-SPLINT

Esthetic fiber reinforced splint



# NEW LAUNCHES



**Kids-e-Restore**  
Injectable Glass Ionomer Composite Resin

**e-Pit & Fissure Sealant**  
Nano silver reinforced pit and fissure sealant

**Kids-e-Files**  
Pediatric Rotary Files



Get in touch with us

+355694272462, +35542467883  info@radiopharma.al  radiopharma\_dental\_albania

For More information Kindly Visit

[www.radiopharma.al](http://www.radiopharma.al)